

# Reliable Partner for: Engineering, Management and Environmental Services



## **MARRS**

**MARRS Services, Inc.**

340 E. Commonwealth Ave.

Fullerton, CA 92832

T: (714) 213-8650 F: (714) 213-8657

Los Angeles County

205 S. Broadway, Suite 618

Los Angeles, CA 90012

T: (213) 253-4771 F: (213) 253-4781

San Diego County

101 State Place, Suite J

Escondido, CA 92029

T: (760) 233-1840 F: (760) 233-7510

# Purpose

---

- ➔ Present MARRS capabilities and Experience
- ➔ Build stronger relationships
- ➔ Identify major project opportunities for MARRS to team

# About MARRS

---

- ➔ **California Corporation since 1989**
- ➔ **45 Employees**
- ➔ **Small business enterprise**
  - WBE/MBE/DBE/SBE
- ➔ **Business Lines:**
  - PM/CM & Project Controls
  - Utilities & Civil Engineering
  - Environmental Compliance
  - HTRW and MEC Investigation & Remediation



# PM / CM & Project Controls

---

- ➔ PM/CM
- ➔ Cost Estimating/ Cost Engineering
- ➔ Scheduling
- ➔ Document Control
- ➔ Claims Analysis and Support
- ➔ Field Office Technology Support
- ➔ Startup and Operation

# Airports

---



- ➔ **LAX Master Plan EIS/EIR**
  - Scheduling and Construction Sequencing
  - Construction Resource Estimation
  - Utilities Inventory and Database Development
  - Utilities Management Plans and Construction Impacts
- ➔ **LAX Theme Building**
  - Project Scheduling and Claims

- ➔ **LAX Modernization Program Management**
  - Project Management
  - Cost Estimating and Scheduling
  - Contract Administration
  - Document Control
  - Administrative Support
- ➔ **SDCRAA Program Management**
  - Project Management
  - Inspection



# Transit and Transportation

---

- ➔ Metro Expo I Construction Support to CLA BOE
  - Submittals Review
  - Field Investigations/ Verification
- ➔ Metro Los Angeles River Bridge and Universal City Station Site Improvements
  - Resident Engineering
  - Agency Coordination
- ➔ ACTA Grade Separation Project
  - Project Controls Review
  - Potential Cost Growth Review
- ➔ Caltrans District 7 and 12 Scheduling and Claims Support
- ➔ Orange County Transportation Authority, Bus Facilities
  - PM/CM Retrofit Projects
  - RE, Inspection, Project Controls, Claims Support for Santa Ana Bus Base





# Water / Civil Infrastructure

- ➔ City of Los Angeles, BOE Hyperion, ATFs ECIS, NORS
  - PM/CM
  - Scheduling and Estimating
  - Document Control
- ➔ MWD, CRA Repair/Upgrade
  - Office Engineering
  - Inspection
  - Administrative Support
- ➔ Port of Long Beach CIP Program
  - Master Scheduling
- ➔ SDCWA, Pipeline and Reservoir Projects
  - Scheduling/Estimating
  - Inspection
  - Document Control
  - Office Engineering



# Civil / Utilities Engineering

---

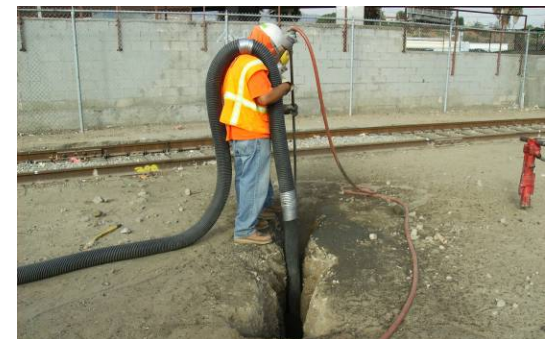
- ⇒ General Civil Engineering
- ⇒ Utilities Investigation and Documentation
- ⇒ Drainage
- ⇒ Water, Wastewater and Storm Water Quality
- ⇒ CADD/GIS Support
- ⇒ Agency Coordination / Permitting



# Utilities / Civil Infrastructure

---

- ➔ LADWP Owens Lake Dust Mitigation
  - Civil, Drainage, Mechanical, Pipelines
- ➔ John S. Gibson/I-110 Improvements
  - Utilities Engineering
- ➔ Marine Corps Base Camp Pendleton
  - Fire Loop Water Main
  - Wash Racks & Pre-treatment Facilities
- ➔ Caltrans District 4: Structural BMPs Evaluation / Concept Design
  - Hydrology/ Hydraulics
  - Preliminary Engineering
  - Cost Estimating



# Airports/Transportation Design Support

---

## ➔ Midfield Satellite Concourse, TBIT and Related Projects

- Utilities Design/Coordination
- Scheduling
- CADD Support
- Document Control/Admin.



## ➔ North, South Runways Improvements and RON

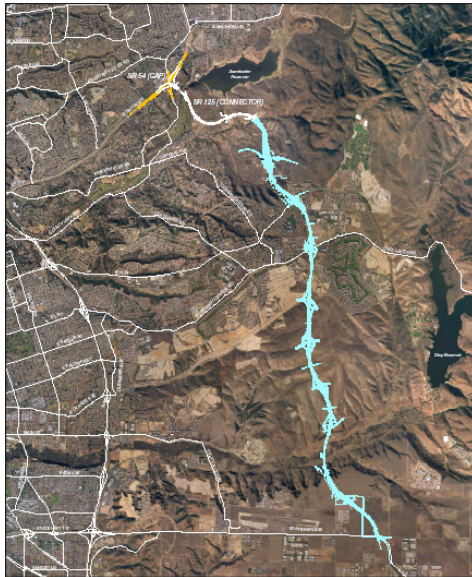
- Scheduling and Construction Sequencing
- Construction Cost Estimate

## ➔ Caltrans District 7: I-5 and I-405 Improvements

- Utilities Documentation
- Carmenita Interchange Civil Design Support

# Design/Build Support

---

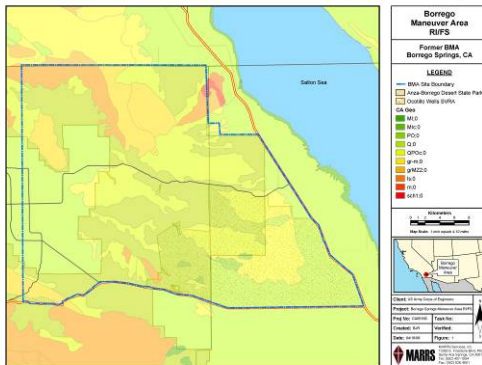


- ➔ SR 125 Toll Road Utilities Relocation
  - Design plans and specifications
  - Owners/agency coordination
  - Document control
- ➔ I-110/I-10 HOT Lanes
  - Utility Engineering
- ➔ Twin Oaks Filtration Plant
  - Civil and Utility Design
  - Document Control
- ➔ LADWP Owens Lake Dust Mitigation
  - Preliminary Engineering
  - Design-Build RFP Development
- ➔ Metro SFV Bus Rapid Way
  - Design Review and Agency Coordination

# IT-GIS Integration & Support Services



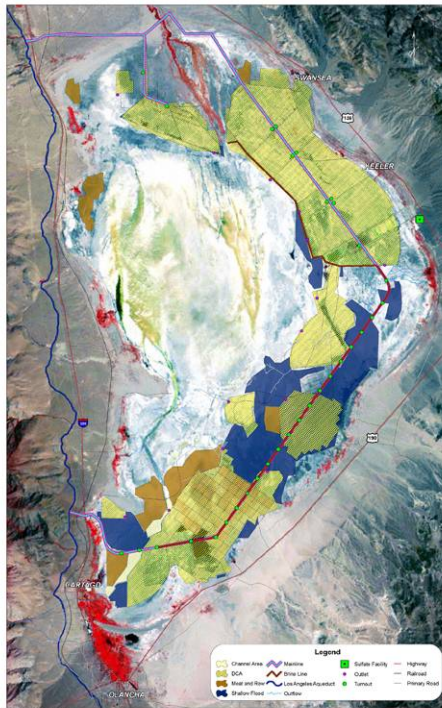
GPS Outfall Identification



- ➔ City of Los Angeles, BOE, SMARTS Application
  - Secondary Sewer Repair/replacement Design Tool
- ➔ US Navy NAVFAC SW Environmental Compliance
  - Storm Water Monitoring Reports
  - Base Facilities Environmental Compliance
- ➔ US Army Corps of Engineers
  - Borrego Maneuver Area & Mojave Gunnery Range “C” RI/FS
- ➔ Caltrans District 7 Storm Drainage and Outfalls Inventory
- ➔ LAX Master Plan Utilities Inventory Database (9 square miles)



# IT-Database Integration Support



- ➔ LAX Master Plan Utilities Inventory Database (9 square miles)
  - Utilities Inventory
  - Utility Plans
  - Utilities Database and Construction Impacts
  
- ➔ City of Los Angeles, LADWP, Owens Lake Dust Mitigation Program 240 sq. miles.
  - Database Administration (SQL/Oracle)
  - Data Conversion (Collection)
  - Data Query Building / Reporting
  - GIS Data Warehousing
  
- ➔ Los Angeles County Sanitation District – Asset Management Services: EMMS/CMMS Deployment
  - Asset Management: Data Conversion to Synergen Relational Database System (SQL) for the entire LACSD facilities network
  - Data Migration Plan
    - Data Identification
    - Stakeholder Coordination
    - Data Mapping

# Environmental Compliance and Remediation

---

- ➔ Characterization and Remediation of Contaminated Waste
- ➔ PA/SI, FSI, EE/CA, RI/FS Action Memo and Removal Action
- ➔ Planning Documents
- ➔ Stormwater NPDES and SWPPP
- ➔ Groundwater Monitoring and Remediation
- ➔ SPCC Plans
- ➔ MEC Management

# Waste Characterization and Remediation

---



- ➔ USACE, Garden Grove, CA
  - Unanticipated Landfill
  - Characterization & Remediation of 375 drums

- ➔ UST Removal, Gas Stations
  - Soil sampling & characterization
  - Third party review of compliance documents
  - Alternative Remediation Strategies



- ➔ Norwalk Transit Bus Operation & Maintenance
  - Hydrocarbon contaminated soil
  - Soil characterization and remediation



# Contaminated Groundwater & Stormwater Monitoring and Reporting

---



- ➔ Navy and Marine Corps Bases CA, GW
  - Sampling and Analysis
  - Ground Water Contour Mapping
  - Contamination Plume Analysis
  - Report Preparation
  
- ➔ Navy and Marine Corps Bases CA, SW
  - NPDES Permit Compliance
  - Annual Compliance Reporting
  - SWMP Updates
  - Illicit Connections Investigations
  
- ➔ OCTA Santa Ana Bus Base
  - Contaminated GW Dewatering
  - NPDES Permitting
  - SWPPP